

20220627



Oil Pattern Distance: 41 Feet **Reverse Brush Drop:** 41 Feet **Oil Per Board:** 35 uL
Forward Oil Total: 10.325 mL **Reverse Oil Total:** 3.045 mL **Volume Oil Total:** 13.37 mL
Forward Boards Crossed: 295 Boards **Reverse Boards Crossed:** 87 Boards **Total Boards Crossed:** 382 Boards

	Start	Stop	Loads	Speed	Crossed	Start	End	Feet	T.Oil
1	2L	2R	2	14	74	0.0	1.9	1.9	2590
2	8L	8R	2	18	50	1.9	7.0	5.1	1750
3	9L	9R	2	18	46	7.0	12.1	5.1	1610
4	10L	10R	2	18	42	12.1	17.2	5.1	1470
5	12L	12R	2	18	34	17.2	22.3	5.1	1190
6	12L	12R	2	18	34	22.3	27.4	5.1	1190
7	13L	13R	1	22	15	27.4	30.5	3.1	525
8	2L	2R	0	26	0	30.5	41.0	10.5	0

Navigation: Forward Reverse More

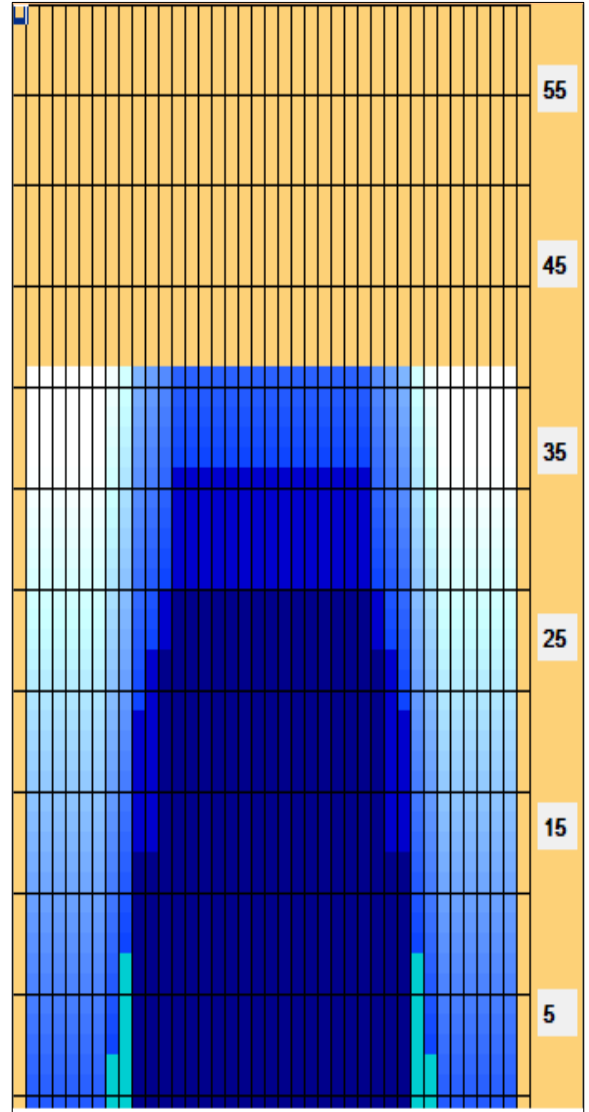
	Start	Stop	Loads	Speed	Crossed	Start	End	Feet	T.Oil
1	2L	2R	0	30	0	41.0	36.0	-5.0	0
2	13L	13R	2	22	30	36.0	29.8	-6.2	1050
3	12L	12R	1	22	17	29.8	26.7	-3.1	595
4	11L	11R	1	22	19	26.7	23.6	-3.1	665
5	10L	10R	1	22	21	23.6	20.5	-3.1	735
6	2L	2R	0	26	0	20.5	0.0	-20.5	0

Navigation: Forward Reverse More

Conditioner:
Type In or Select One

TransferType:
Type In or Select One

- Forward
- Reverse
- Combined
- Buff



Item Description	3L-7L:18L-18R Outside Track:Middle	8L-12L:18L-18R Middle Track:Middle	13L-17L:18L-18R Inside Track:Middle	18L-18R:17R-13R Middle: Inside Track	18L-18R:12R-8R Middle:Middle Track	18L-18R:7R-3R Middle:Outside Track
Track Zone Ratio	9	2.05	1	1	2.05	9

