

# 20240624-43ft



**Oil Pattern Distance:** 43 Feet      **Reverse Brush Drop:** 43 Feet      **Oil Per Board:** 50 uL  
**Forward Oil Total:** 13.1 mL      **Reverse Oil Total:** 12.6 mL      **Volume Oil Total:** 25.7 mL  
**Forward Boards Crossed:** 262 Boards      **Reverse Boards Crossed:** 252 Boards      **Total Boards Crossed:** 514 Boards

	Start	Stop	Loads	Speed	Crossed	Start	End	Feet	T.Oil
1	2L	2R	1	14	37	0.0	0.0	0.0	1850
2	4L	4R	1	14	33	0.0	1.9	1.9	1650
3	6L	6R	2	14	58	1.9	5.8	3.9	2900
4	7L	7R	2	14	54	5.8	9.7	3.9	2700
5	10L	10R	2	14	42	9.7	13.6	3.9	2100
6	11L	11R	2	18	38	13.6	18.7	5.1	1900
7	2L	2R	0	22	0	18.7	36.0	17.3	0
8	2L	2R	0	30	0	36.0	43.0	7.0	0

Conditioner:  
Type In or Select One

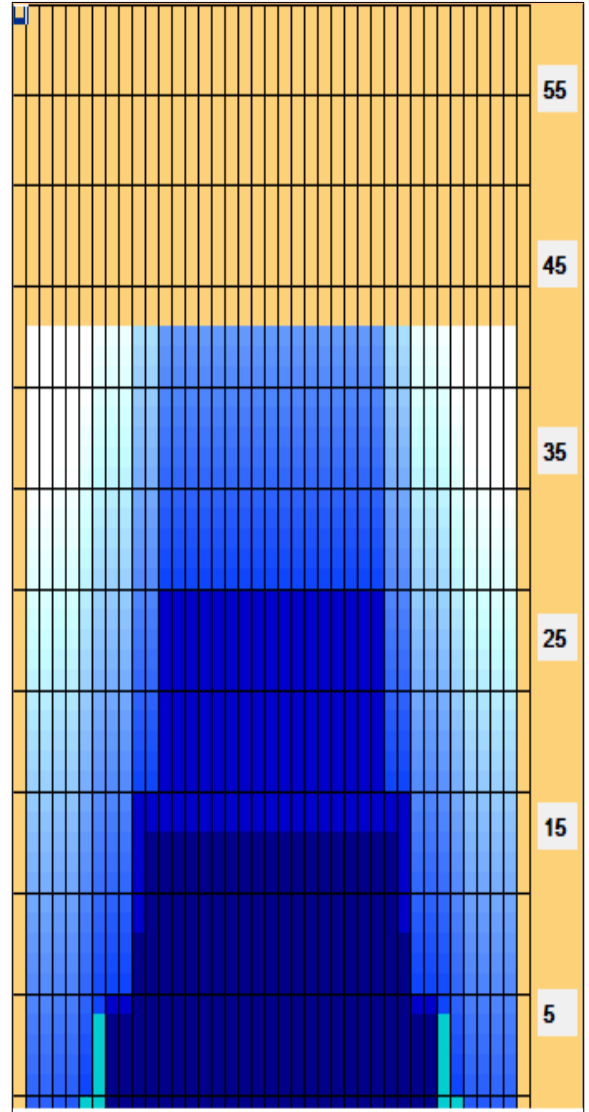
TransferType:  
Type In or Select One

- Forward
- Reverse
- Combined
- Buff

Navigation: Forward Reverse More

	Start	Stop	Loads	Speed	Crossed	Start	End	Feet	T.Oil
1	2L	2R	0	30	0	43.0	30.0	-13.0	0
2	12L	12R	4	18	68	30.0	19.8	-10.2	3400
3	10L	10R	4	18	84	19.8	9.6	-10.2	4200
4	8L	8R	4	14	100	9.6	1.7	-7.9	5000
5	7L	7R	0	14	0	1.7	0.0	-1.7	0

Navigation: Forward Reverse More



Item Description	3L-7L:18L-18R Outside Track:Middle	8L-12L:18L-18R Middle Track:Middle	13L-17L:18L-18R Inside Track:Middle	18L-18R:17R-13R Middle: Inside Track	18L-18R:12R-8R Middle:Middle Track	18L-18R:7R-3R Middle:Outside Track
Track Zone Ratio	7.33	1.45	1	1	1.45	7.33

