

20241222-43ft



Oil Pattern Distance: 43 Feet **Reverse Brush Drop:** 43 Feet **Oil Per Board:** 100 uL
Forward Oil Total: 24.3 mL **Reverse Oil Total:** 23.2 mL **Volume Oil Total:** 47.5 mL
Forward Boards Crossed: 243 Boards **Reverse Boards Crossed:** 232 Boards **Total Boards Crossed:** 475 Boards

	Start	Stop	Loads	Speed	Crossed	Start	End	Feet	T.Oil
1	2L	2R	1	14	37	0.0	0.0	0.0	3700
2	6L	6R	1	14	29	0.0	1.9	1.9	2900
3	8L	8R	1	14	25	1.9	3.8	1.9	2500
4	10L	10R	1	14	21	3.8	5.7	1.9	2100
5	10L	10R	1	14	21	5.7	7.6	1.9	2100
6	10L	10R	1	14	21	7.6	9.5	1.9	2100
7	11L	11R	1	14	19	9.5	11.4	1.9	1900
8	11L	11R	1	14	19	11.4	13.3	1.9	1900
9	12L	12R	1	14	17	13.3	15.2	1.9	1700
10	12L	12R	1	14	17	15.2	17.1	1.9	1700
11	12L	12R	1	14	17	17.1	19.0	1.9	1700
12	2L	2R	0	22	0	19.0	34.0	15.0	0
13	2L	2R	0	22	0	34.0	43.0	9.0	0

Forward Reverse More

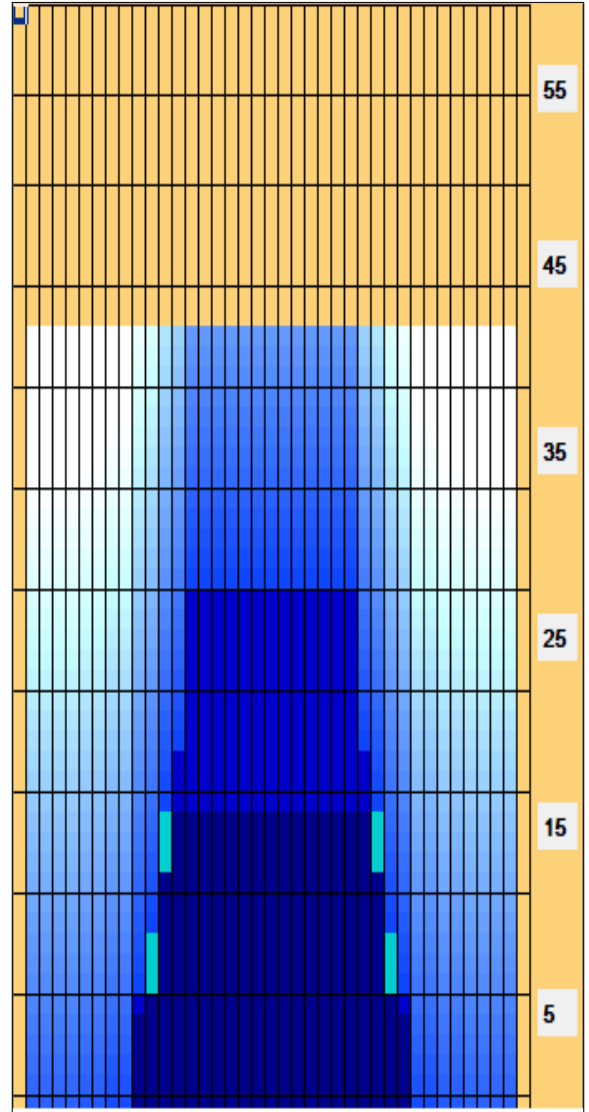
	Start	Stop	Loads	Speed	Crossed	Start	End	Feet	T.Oil
1	2L	2R	0	30	0	43.0	30.0	-13.0	0
2	14L	14R	4	14	52	30.0	22.1	-7.9	5200
3	13L	13R	3	14	45	22.1	16.2	-5.9	4500
4	12L	12R	3	14	51	16.2	10.3	-5.9	5100
5	10L	10R	4	14	84	10.3	2.4	-7.9	8400
6	7L	7R	0	26	0	2.4	0.0	-2.4	0

Forward Reverse More

Conditioner:
Type In or Select One

TransferType:
Type In or Select One

- Forward
- Reverse
- Combined
- Buff



Item Description	3L-7L:18L-18R Outside Track:Middle	8L-12L:18L-18R Middle Track:Middle	13L-17L:18L-18R Inside Track:Middle	18L-18R:17R-13R Middle: Inside Track	18L-18R:12R-8R Middle:Middle Track	18L-18R:7R-3R Middle:Outside Track
Track Zone Ratio	17.86	2.72	1.03	1.03	2.72	17.86

