

20250626-43ft



Oil Pattern Distance:	43 Feet	Reverse Brush Drop:	43 Feet	Oil Per Board:	50 uL
Forward Oil Total:	16.55 mL	Reverse Oil Total:	6.5 mL	Volume Oil Total:	23.05 mL
Forward Boards Crossed:	331 Boards	Reverse Boards Crossed:	130 Boards	Total Boards Crossed:	461 Boards

	Start	Stop	Loads	Speed	Crossed	Start	End	Feet	T.Oil
1	4L	5R	2	10	64	0.0	1.4	1.4	3200
2	6L	7R	2	10	56	1.4	4.2	2.8	2800
3	8L	9R	2	14	48	4.2	8.1	3.9	2400
4	10L	11R	2	14	40	8.1	12.0	3.9	2000
5	12L	12R	3	18	51	12.0	19.6	7.6	2550
6	14L	14R	3	18	39	19.6	27.2	7.6	1950
7	15L	15R	3	18	33	27.2	34.8	7.6	1650
8	5L	6R	0	22	0	34.8	43.0	8.2	0

Forward Reverse More

	Start	Stop	Loads	Speed	Crossed	Start	End	Feet	T.Oil
1	2L	2R	0	30	0	43.0	32.0	-11.0	0
2	14L	14R	2	26	26	32.0	24.7	-7.3	1300
3	13L	13R	2	26	30	24.7	17.4	-7.3	1500
4	12L	12R	2	26	34	17.4	10.1	-7.3	1700
5	10L	11R	2	22	40	10.1	3.9	-6.2	2000
6	5L	6R	0	10	0	3.9	0.0	-3.9	0

Forward Reverse More

Conditioner:
Type In or Select One

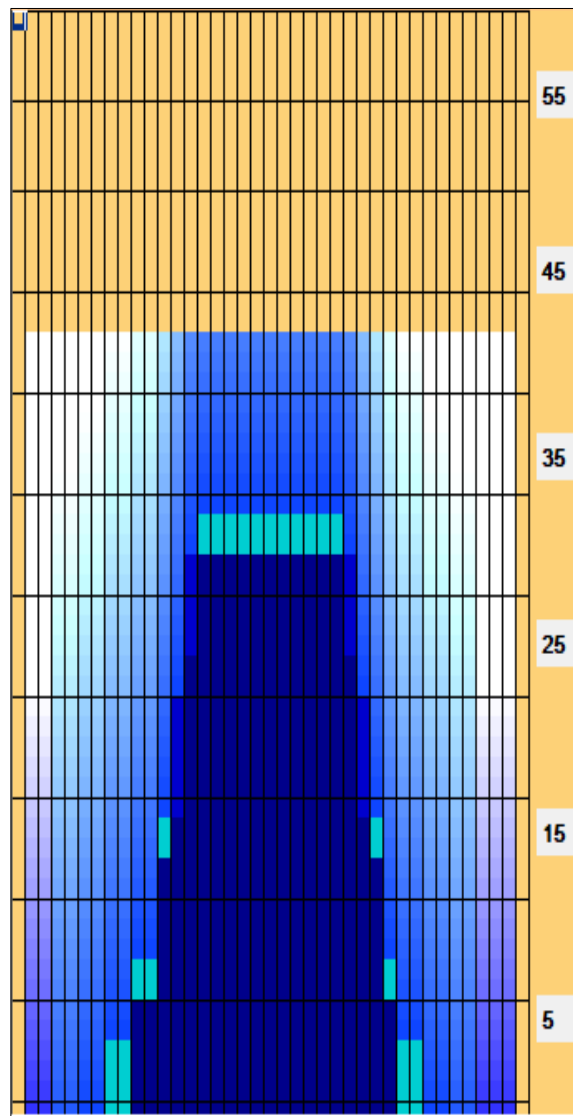
TransferType:
Type In or Select One

Forward

Reverse

Combined

Buff



Item	3L-7L:18L-18R	8L-12L:18L-18R	13L-17L:18L-18R	18L-18R:17R-13R	18L-18R:12R-8R	18L-18R:7R-3R
Description	Outside Track:Middle	Middle Track:Middle	Inside Track:Middle	Middle: Inside Track	Middle:Middle Track	Middle:Outside Track
Track Zone Ratio	10.42	2.66	1.1	1.1	3.05	15.63

