

20221230



Oil Pattern Distance: 44 Feet **Reverse Brush Drop:** 44 Feet **Oil Per Board:** 30 uL
Forward Oil Total: 6.09 mL **Reverse Oil Total:** 2.67 mL **Volume Oil Total:** 8.76 mL
Forward Boards Crossed: 203 Boards **Reverse Boards Crossed:** 89 Boards **Total Boards Crossed:** 292 Boards

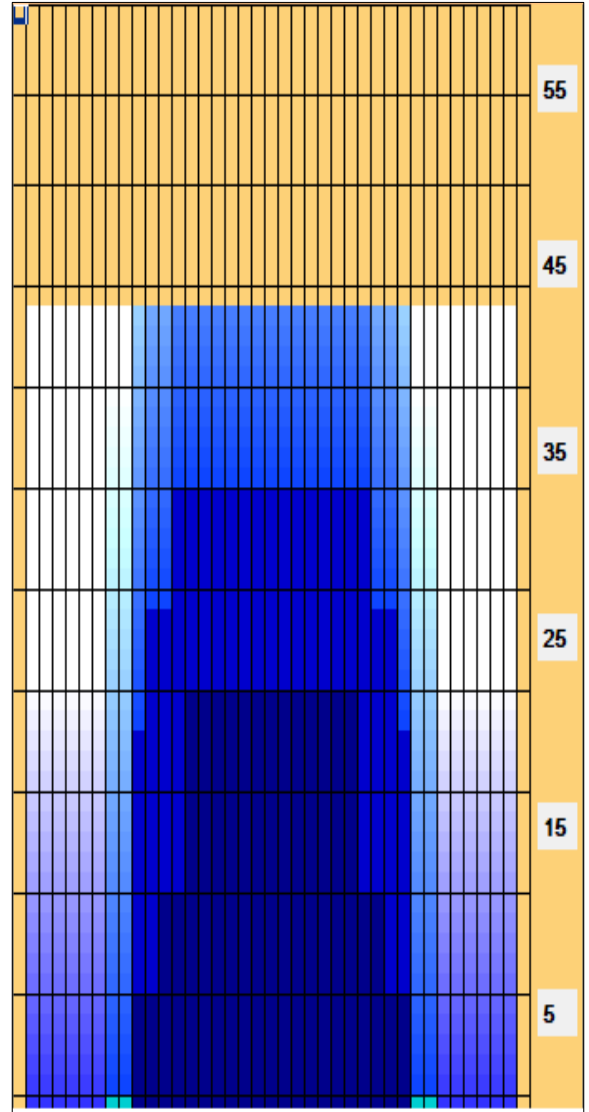
	Start	Stop	Loads	Speed	Crossed	Start	End	Feet	T.Oil
1	8L	8R	3	18	75	0.0	5.1	5.1	2250
2	10L	10R	2	18	42	5.1	10.2	5.1	1260
3	12L	12R	2	18	34	10.2	15.3	5.1	1020
4	14L	14R	2	18	26	15.3	20.4	5.1	780
5	14L	14R	2	18	26	20.4	25.5	5.1	780
6	2L	2R	0	18	0	25.5	44.0	18.5	0

	Start	Stop	Loads	Speed	Crossed	Start	End	Feet	T.Oil
1	2L	2R	0	18	0	44.0	35.0	-9.0	0
2	13L	13R	2	22	30	35.0	28.8	-6.2	900
3	11L	11R	2	22	38	28.8	22.6	-6.2	1140
4	10L	10R	1	22	21	22.6	19.5	-3.1	630
5	2L	2R	0	22	0	19.5	0.0	-19.5	0

Conditioner:
Type In or Select One

TransferType:
Type In or Select One

- Forward
- Reverse
- Combined
- Buff



Item	3L-7L:18L-18R	8L-12L:18L-18R	13L-17L:18L-18R	18L-18R:17R-13R	18L-18R:12R-8R	18L-18R:7R-3R
Description	Outside Track:Middle	Middle Track:Middle	Inside Track:Middle	Middle: Inside Track	Middle:Middle Track	Middle:Outside Track
Track Zone Ratio	Infinity	2.67	1.05	1.05	2.67	Infinity

